

Interreg
Europe



Co-funded by
the European Union

CARES

Study Visit n°2

Nouvelle-Aquitaine Region, France

BEATA - Need adjusted care, supervision and working methods

Partner n. xxx

Eva Broman

Project Manager, municipality of Linköping
eva.broman@linkoping.se

22 NOVEMBER 2023 | 7-10 Minutes | France

BEATA - Need adjusted care, supervision and working methods

What is BEATA?

A **change-and development** work including all special accommodations for elderly and disabled

Aim

Investigate how **safety-creating technology** in combination with changed working methods for staff can be used in order to work smarter and use the resources where and when they are needed

Why is BEATA needed?

Demographics: elderly population

Competence supply is a big challenge now and in the future

Work smarter and use the resources where and when they are needed

Phases

Phase 1: Preparations

Phase 2: Development

Phase 3: Procurement

Phase 4: Implementation

Phase 5: Management

Benefits

90% reduction in physical inspection visits, enabling more efficient use of human resources

Discovers if the care recipients is in a risky situation

Open procurement process - we have a supplier contracted

Resources:

Technical devices - RoomMate
Company that can deliver
solutions and management of the
tools.

The scope:

1400 care recipients
1800 staff
40 special accommodations

Provided and standard:

By the municipality of
Linköping, standard for all
special accommodations.
Both private and municipal.

Challenge:

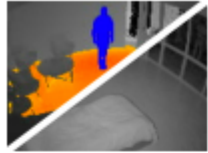
Develop new working methods
for
the staff and learn how to use
the techniques instead of
physical
visits.

This is RoomMate

- **Scans up to 30 sqm**
- Creates a thermal image of the room
- **Image analysis anonymisation filter** and encryption locally in the unit
- Detects if the care recipient is in a risky situation
 - supervises and informs the staff
- Requires no active supervision
- Personalization
- Lowers the risk of aberrancy



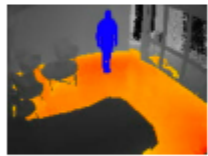
What type of supervision is used



- Supervision can be carried out with anonymized image and also with detailed image.



- Supervision can only be carried out with a detailed image.



- Supervision can only be carried out with an anonymised image.



- No photos allowed in this apartment.



- Two-way calls

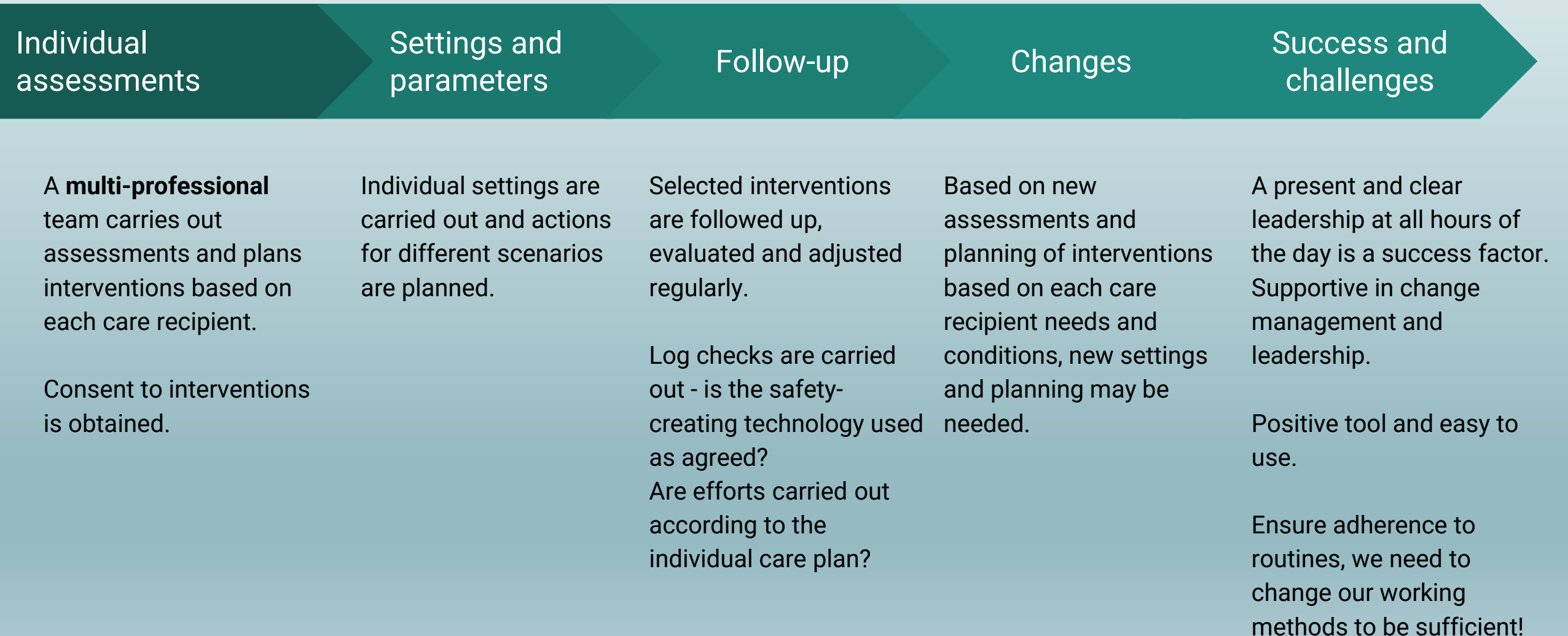


- Listening



- Anonymized listening

Implementation - difficulties encountered, success factor



Plan

2023-11	2024	2024	2025	2032
Implementation start	Tests	Implementation continues	Implementation continues	The contract expires
4 accomodation units	Validation tests	20 accomodations	20 accomodations	New procurement process?

**Interreg
Europe**



Co-funded by
the European Union

CARES

Thank you!

www.interregeurope.eu/CARES

RoomMate

Cecilie Bache-Aasen
Kunderådgiver
RoomMate AS

